

Bowling Park Primary School

Headteacher: Salma Rahman

New Cross Street, Bradford, BD5 8BT Tel: 01274 770270

Usher Street, Bradford, BD4 7DS Tel: 01274 723255



Dear parents and carers,

Welcome to our Year 3 Autumn 1 newsletter.

Our topic for this half term is, The United Kingdom!

As **Geographers** we will be learning about settlements including:

- How land is used in our local area.
- How land has changed overtime
- How land is used in New Delhi



In **English** we will be writing a letter to Paddington bear informing him about why he should visit Bradford, including all the beautiful landmarks and attractions it possesses.

We will also create a travel brochure to persuade people to come and visit the UK!

In **Maths** we will be consolidating our learning from Year 2, focusing on our knowledge of place value from 0-1000. We will then begin to add and subtract using 3-digit numbers. You can support with this learning by accessing the following links from home.

<https://www.topmarks.co.uk/maths-games/5-7-years/addition-and-subtraction>

<https://www.topmarks.co.uk/maths-games/5-7-years/multiplication-and-division>

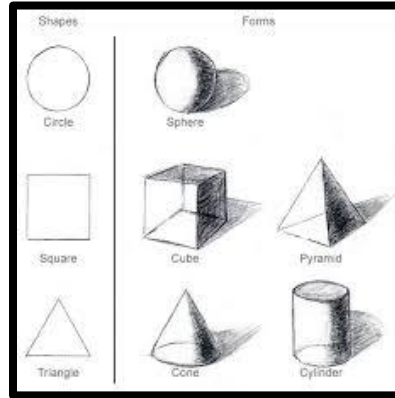
<https://play.trockstars.com/>



As **Scientists** we will be looking at forces and magnets. We will be working scientifically to investigate friction and the strengths of magnets.

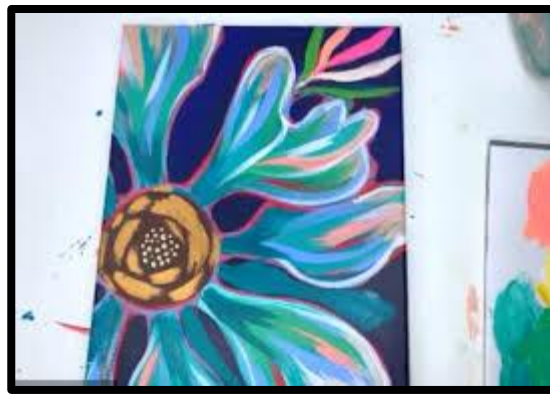
Let's get creative!

In **ART** we will be learning how to see through the eyes of artists. Focusing on shapes and lines that are used in all drawings, we will be using our newfound skills to create abstract, scaled drawings.



Family Homework Challenge!

Can you become a real-life artist? Go on a walk around a park and identify all the flowers you can see. Can you draw them? Be creative with how you choose to paint. You could use paint, or you could pick some flowers and mix their petals in water to create new colours.



You should already have your Spelling Shed and TTRockstars logins, but please let us know if you are having any problems accessing this at home. Please also make sure you are trying your best to read at home: even if it's just two pages each night.

Home learning expectations

Please take some time to look at the following table to see what your child should be doing at home to extend their learning:

Activity/Task	Frequency
Reading at home	X3 a week
TT Rockstars	Daily – for 5 minutes
Spelling Shed	Daily - for 5 minutes

As always, if you have any questions then please speak to your child's class teacher.

The Year 3 team